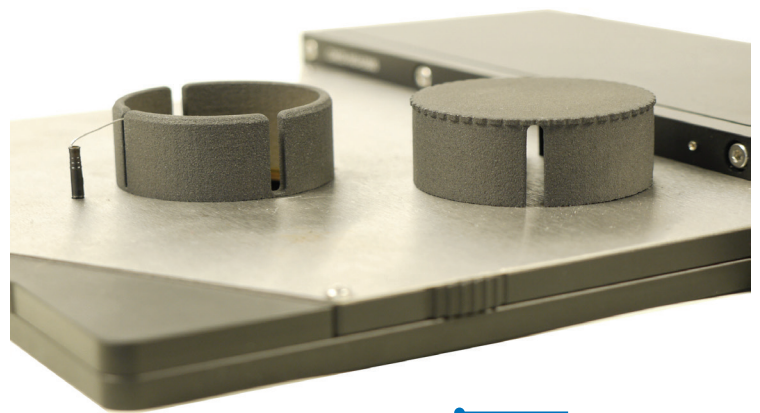


**CMOS-DC**

**Dark Chamber for Use with  
the CMOS-MEA5000-System**

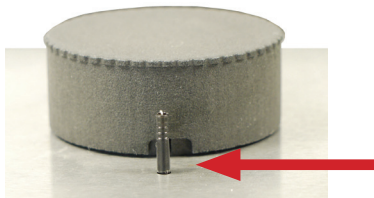


**Application**

Opaque chamber made from black polyamide for use with the CMOS-MEA5000-System to cover the light sensitive CMOS sensor arrays on the CMOS-MEA chip.

The chamber consists of two parts. The base part fits perfectly into the open area on the CMOS-MEA headstage and offers three slots. Insert the reference electrode through the smallest slot. Two bigger slots allow perfusion of the sensor array.

Take care for the orientation, the slot for the reference electrode should be placed in the opposite of the connector for the reference electrode.



The lid of the dark chamber is equipped with complementary slots.

Close the chamber completely, if no perfusion is needed. Insert the inlet of the perfusion through one slot and the outlet through the other when using perfusion.

