

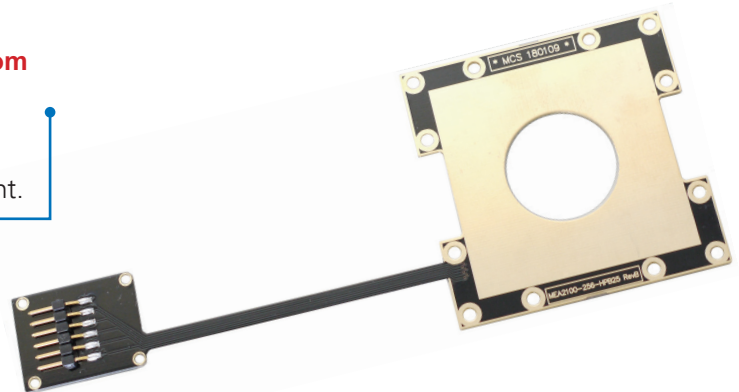
ME2100-HE256-8  
ME2100-HE256-12  
ME2100-HE256-25

Heating Elements for ME2100-256-Systems

**IMPORTANT:**

**Please disconnect the ME2100-256 headstage from the interface board and from the electrical outlet!**

Please follow the instructions with great care. Only experienced persons should change the heating element.



**Heating Elements with PT100 Sensor for ME2100-256-Systems**

The heating elements are adapted to the requirements of the microscopes which are used together with the ME2100-256-Systems.

A heating element without bore hole is for upright microscopes, a heating element with bore hole is for inverted microscopes.

Diameters of 8, 12 and 25 mm for the bore holes are available: ME2100-HE256-8 (or -12, or -25) with 8 mm bore hole for inverted microscopes. ME2100-HE256-12 and ME2100-HE256-25 have 12 mm and 25 mm bore holes, respectively.

**ME2100-HE256:**

ME2100-HE256-8  
ME2100-HE256-12  
ME2100-HE256-25

**Warning:** The device may only be used together with MEA-Systems from Multi Channel Systems MCS GmbH, and only for the specified purpose. Damage of the device and even fatal injuries can result from improper use.



**Scope of delivery**

1 ME2100-HE256-8 or -12, or -25; 16 screws

## Heating Elements for Use with MEA2100-256-Systems

### Instructions for the Replacement of the Heating Element HE-8 (or -12, or -25) of the MEA2100-256 Headstage

#### Instructions for the Replacement of the Heating Element MEA2100-HE256

1. Turn the ground plate of the MEA 2100-256 headstage around and put it onto a soft surface to avoid scratches.
2. You need a TORX T6 screw driver to remove the designated screws (M2 x 4).
3. Unscrew the four screws which fix the connector of the heating element. Keep the screws for reusing them later.
4. Unscrew the twelve screws (M2 x 4) which fix the body of the heating element with the TORX T6 screw driver.
5. Remove the heating element.
6. Replace the heating element with the spare part in correct orientation.
7. Fix the new heating element with the provided screws.

