

MEA2100-PE2x60 and MEA2100-HE2x60 Perfusion Element and Heating Element Rev B

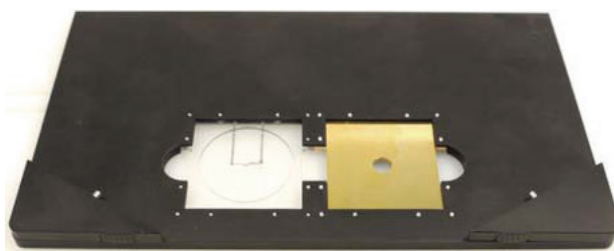
Instructions for the Replacement of the Perfusion Element and / or Heating Element of the Headstage MEA2100-HS2x60 of the MEA2100-System.



Important:

Disconnect the MEA2100-System from the electrical outlet!

Please follow the instructions with great care. Only experienced persons should change the elements on the ground plate of the MEA2100 headstage.

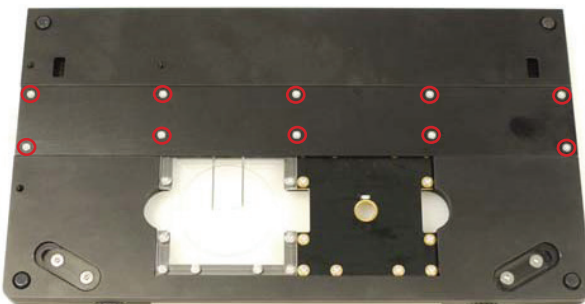


Perfusion Element Heating Element

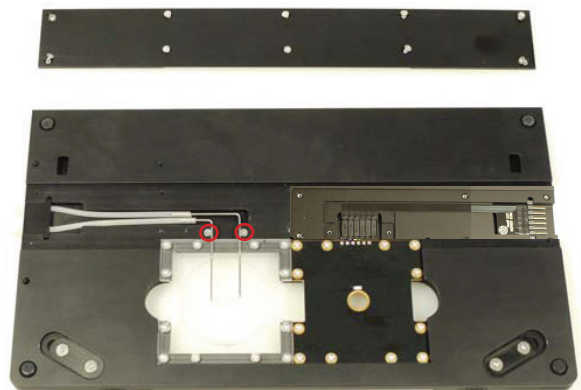
MEA2100-HS2x60-System

Ground plate of the headstage equipped with heating element **MEA2100-HE2x60** and perfusion element **MEA2100-PE2x60**.

Turn the ground plate of the MEA2100 headstage around and put it onto a soft surface to avoid scratches. You need a TORX T6 screw driver to remove the designated screws (M2 x 4). Unscrew the ten screws which fix the cover for the tubing and the platine of the heating element. Keep the screws for reusing them later.



Remove the two screws (M2 x 3) which fix the steel tubes of the perfusion element. These two screws are shorter than all other screws.
Do not mistake the screws!

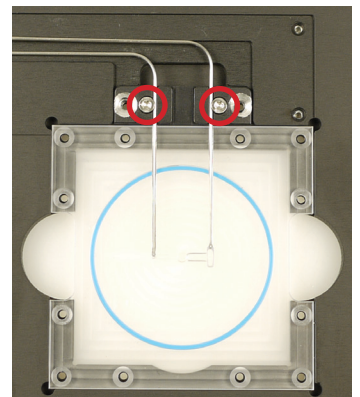
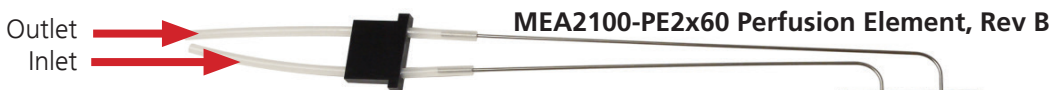


MEA2100-PE2x60 and MEA2100-HE2x60 Perfusion Element and Heating Element Rev B

Instructions for Replacement

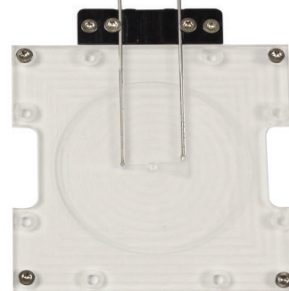
Important:

Disconnect the MEA2100-System
from the electrical outlet!

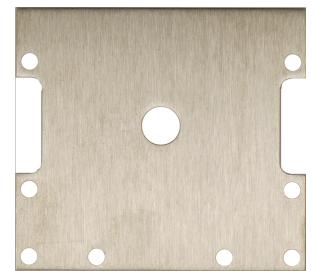


Replacement of a Perfusion Element

Remove the screws which fix the steel tubes of the perfusion element. They connect the steel tubes to the ground of the headstage. Please use a TORX T6 screw driver. Unscrew the 8 screws (M2 x 4) to remove the metal plate and the perfusion element.

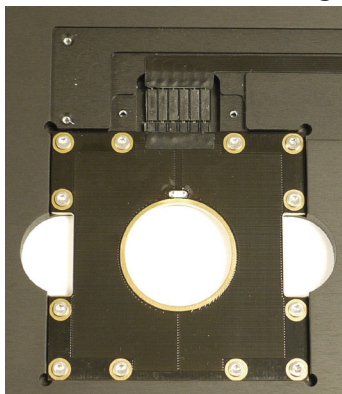


Important: Do not clean
the plexiglass with alcohol!



Metal plate for shielding

MEA2100-HE2x60 Heating Element, Rev B



Replacement of a Heating Element

Unscrew the 12 screws (M2 x 4) which fix the heating element in the ground plate. Remove the heating element together with the printed circuit board and the connector, if you want to replace the heating element with a perfusion element.

Remove only the heating element to replace it with another heating element. Connect the replacement to the connector of the printed circuit board.

